



# Bolt-Action Rimfire Rifle

# T-Bolt<sup>22</sup>

IMPORTANT: When ordering, list part number, part name, gun gauge/caliber and serial number. Please specify grade. Prices F.O.B. point of shipment — subject to change without notice. Prices effective January 1, 2024.

Ref. #		Part #	Description
1		B2569012	ACTION MOUNTING SCREW (2)
2		B2569024	TRIGGER HOUSING SCREW WASHER
4	***	B2569044	BOLT BODY (NEW STYLE)
4	***	B2569020	BOLT BODY (OLD STYLE)
5		B2569014	BOLT HANDLE
6		B2569018	BOLT PIN
7		B2569002	COVER END
8	*	B2569019	CROSS BOLT
8	*	B2569084	CROSS BOLT (LH)
9	*	B2569045	EXTRACTOR (LEFT)
9	*	B2569041	EXTRACTOR, (NEW STYLE)
10	*	B2569046	EXTRACTOR (RIGHT)
10	*	B2569041	EXTRACTOR, (NEW STYLE)
11	*	B2569048	EXTRACTOR SPRING
12	*	B2569021	FIRING PIN
12	*	B2569085	FIRING PIN (LH)
13		B2569005	MAGAZINE GEAR (2)
14		B2569007	MAGAZINE FRAME EJECT SPRING
15		B2569008	MAGAZINE FRAME .22LR
15		B2569069	MAGAZINE FRAME .17 HMR & .22 WMR
16		B2569011	MAGAZINE FRAME PIN
17		B2569009	MAGAZINE FRAME SPRING
18		B2569010	MAGAZINE FRAME LATCH
19		B2569003	MAGAZINE SCREW
20		B2569006	MAGAZINE SPRING
21		B2569043	MAGAZINE STOP
22	*	B2569017	MAINSRING
23	*	B2569056	MAINSRING PLUNGER (FRONT)
24	*	B2569057	MAINSRING PLUNGER (REAR)
25	*	B2569015	MAINSRING SPRING BALL
26	*	B2569026	ACTION PIN
27		B2569070	MAGAZINE BODY .17 HMR & .22 WMR
27		B2569004	MAGAZINE BODY .22LR
28	***	B2569034	SAFETY BLOCK
29	***	B2569033	SAFETY LINK
30	***	B2569039	SEAR PIN
31	***	B2569027	SAFETY SELECTOR
32	***	B2569025	SAFETY SPRING
33	***	B2569038	SEAR
34	***	B2569036	SEAR BAR
35	***	B2569037	SEAR SPRING
36		B357970593	SLING SWIVAL STUD FOR WOOD STOCK (FRONT)
37		BST1423602	SLING SWIVEL STUD FOR SYNTHETIC ALL/WOOD (REAR)
38		B2569065	STOCK, SPORTER, COMPOSITE
38		B2569092	STOCK, SPORTER, MAPLE
38		B2569042	STOCK, SPORTER/HUNTER
38		B2569101	STOCK, TARGET, MAPLE AAA
38		B2569093	STOCK, TARGET, WALNUT
38		B2569060	STOCK, VARMINT, WALNUT MC
38		B2569066	STOCK, VARMINT/TARGET, COMPOSITE
38		B2569073	STOCK, VARMINT/TARGET, GREY LAMINATE
38		B2569091	STOCK, VARMINT SPECIAL STAINLESS, ADJ. COMB, GREY LAMINATE
39		B2569050	STOCK PLATE FRNONT 1.3MM
39		B2569051	STOCK PLATE FRNONT 1.6MM
39		B2569052	STOCK PLATE FRNONT 1.9MM
40		B2569053	STOCK PLATE REAR 1.3MM

Ref. #		Part #	Description
40		B2569054	STOCK PLATE REAR 1.6MM
40		B2569055	STOCK PLATE REAR 1.9MM
41	*	B2569035	TRIGGER
42	***	B2569028	TRIGGER HOUSING
43		B2569029	TRIGGER HOUSING COVER
44	*	B2569030	TRIGGER SCREW
45	*	B2569032	TRIGGER SPRING
46	***	B2569039	SEAR BAR PIN
47	***	B2569039	SAFETY PIN
48	*	B2569039	TRIGGER PIN
50		B3579136	SLING SWIVAL STUD ESCUTCHEON
12A		B2569049	FIRING PIN RETAINING BAND
40A		BST7631002	SCOPE BASE FILLER SCREW
4A	***	B2569071	BOLT ASSEMBLY .17 HMR & .22 WMR
4A	***	B2569082	BOLT ASSEMBLY .17 HMR & .22 WMR (LH)
4A	***	B2569083	BOLT ASSEMBLY .22LR (LH)
4A	***	B2569058	BOLT ASSEMBLY CURRENT .22LR
6A		B2569068	BUTT PLATE FOR COMPOSITE STOCK, .17 HMR & .22 WMR
6A		B2569067	BUTT PLATE FOR COMPOSITE STOCK, .22LR
6A		B2464520	BUTT PLATE FOR WOOD STOCK (ALL)
6B		B2464524	RECOIL PAD SCREW, WOOD STOCK
9A	*	B2569047	EXTRACTOR PIN
		B2569022	EXTRACTOR/FIRING PIN RETAINER (ONE PIECE)
		B2569086	MAGAZINE ASSEMBLY, .17 HMR & .22 WMR
		B2569013	MAGAZINE ASSEMBLY, .22LR
		B2569094	THREAD PROTECTOR, TARGET
		B2569095	THREAD PROTECTOR, TARGET, STAINLESS
	***	B2569040	TRIGGER ASSEMBLY

\* Indicates part must be fitted by Browning Service Department or qualified gunsmith.

\*\*\* Factory replacement only. Firearm must be returned.

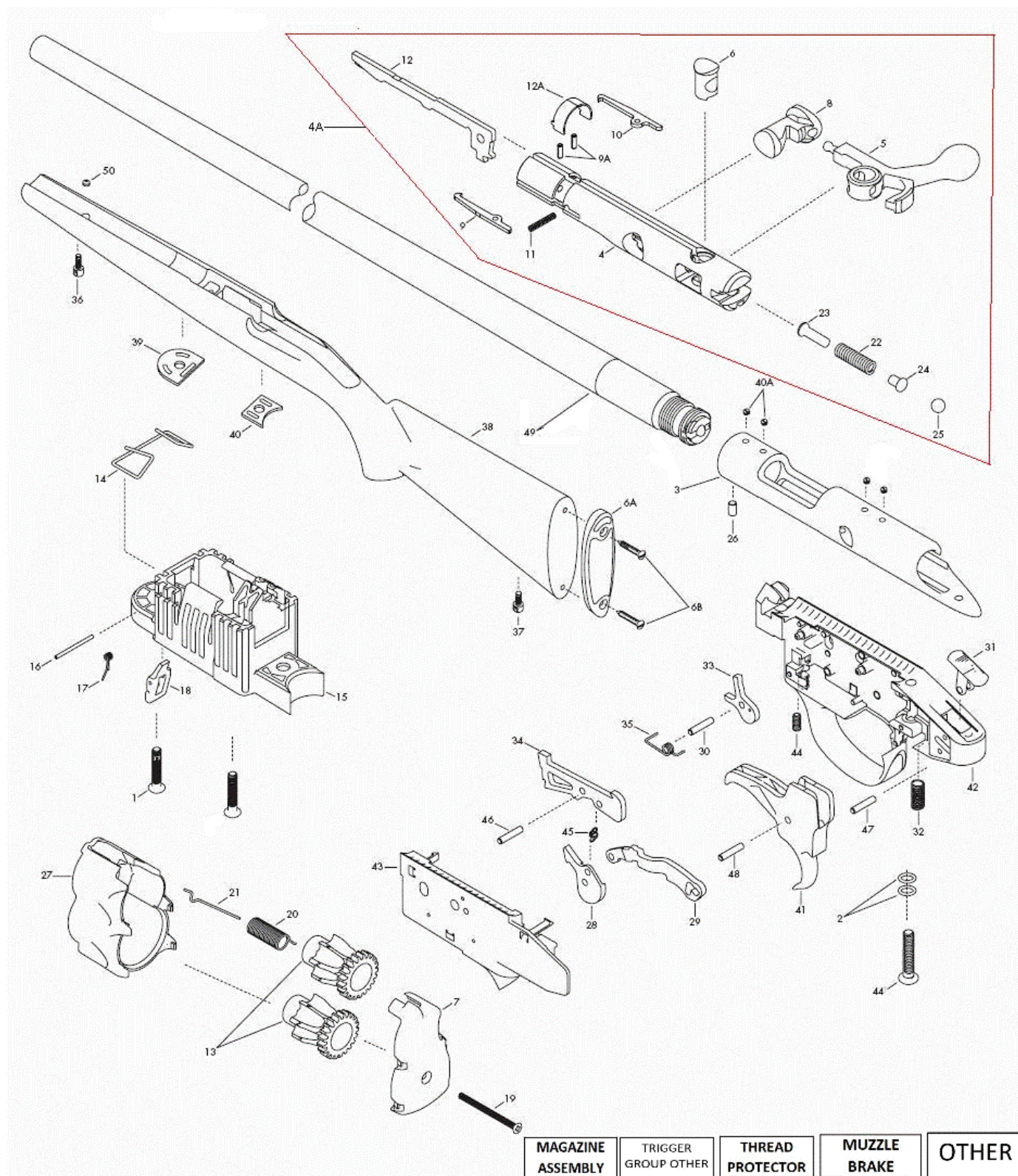
\*\*\*\* These parts are no longer available.

+ Part may be purchased only by holders of a current, valid Federal Firearms License.

NOTE: Unless otherwise indicated, part is interchangeable between gauges/calibers.

## Browning Gun Parts Price List

NOTE: WHEN ORDERING PARTS USE THE PART NUMBER AND NOT THE SCHEMATIC REFERENCE NUMBER



\*Indicates part must be fitted by Browning Service Department or qualified gunsmith.

\*\*\*Factory replacement only. Firearm must be returned.

+ Part may be purchased only by holders of a current, valid Federal Firearms License.

NOTE: Unless otherwise indicated, part is interchangeable between gauges/calibers.