

IMPORTANT: When ordering, list part number, part name, gun gauge/caliber and serial number. Please specify grade. Prices F.O.B. point of shipment — subject to change without notice. Prices effective January 1, 2024.

Ref. #		Part #	Description	Ref. #		Part #	Description
1		B1115479	BARREL, 10GA, 3.5, 26, MOSGH	50	*	B1115218	HAMMER PIN
1		B1115480	BARREL, 10GA, 3.5, 28, MOSGH	51	*	B1115221	HAMMER SPRING
1		B1115484	BARREL, 10GA, 3.5, 26, AURIC	52	*	B1221082	HAMMER SPRING GUIDE
1		B1115485	BARREL, 10GA, 3.5, 28, AURIC	53	*	B1221086	HAMMER SPRING PIN
1		B111590001	BARREL, 10GA, 3.5", 26" MOSGB	54		B1221407	MAGAZINE SPRING RETAINER
1		B111590002	BARREL, 10GA, 3.5", 28" MOSGB	55		B1115240	MAGAZINE CAP, 10GA, MATTE BLACK, W/EYELET
1		B111590003	BARREL, 10GA, 3.5", 26" MOBUC	55		B111525501	MAGAZINE CAP, 10GA, MOSGB, W/EYELET
1		B111590004	BARREL, 10GA, 3.5", 28" MOBUC	55		B111525502	MAGAZINE CAP, 10GA, MOBUC, W/EYELET
1		B111590005	BARREL, 10GA, 3.5", 28" GLOSS	55		B1115481	MAGAZINE CAP, 10GA, MOSGH, W/EYELET
2	*	B1115008	BOLT, GLOSS BLACK	55		B1115486	MAGAZINE CAP, 10GA, AURIC, W/EYELET
3	*	B1115324	BOLT ASSEMBLY, MATTE	56		B1115242	MAGAZINE FOLLOWER
4	*	B1115014	BOLT CUT OFF	57		B1115246	MAGAZINE SPRING
5	*	B1115016	BOLT CUT OFF RETAINING PIN	58		B1115255	MAGAZINE THREE SHOT ADAPTER
6	*	B1115020	BOLT CUT OFF SPRING	59	*	B1115260	MAGAZINE TUBE
7		B1115023	OPERATING HANDLE, STALKER	60		B1115264	PISTON
8		B1115028	BOLT HANDLE RETAINER	61		B1115269	PISTON RING
9		B1115032	BOLT HANDLE RETAINER PIN	62		B1115274	PISTON ROD
10		B1115036	BOLT HANDLE RETAINER SPRING	63		B1115284	PISTON ROD RETAINING PIN
11	*	B1115040	BOLT SLIDE, GLOSS	64		B1115288	PISTON ROD SPRING
11	*	B1115325	BOLT SLIDE, MATTE	65		B1115292	PISTON SEAL
12	*	B1115044	BOLT SLIDE LINK	66		B1115298	PISTON TUBE
13	*	B1115048	BOLT SLIDE LINK PIN	68		B1115310	RECEIVER RAMP
14	*	B1115052	BOLT UNLOCKING PIN	69		B1115318	RECOIL SPRING FOLLOWER
15	*	B1115055	BUFFER/BUFFER PLATE ASSEMBLY (PLATE ASSY WITH BUFFER)	70		B1115322	RECOIL SPRING INNER
17	*	B1115060	BUFFER PLATE ASSEMBLY	71		B1115326	RECOIL SPRING OUTER
20	*	B1115068	BUFFER PLATE TOP PIN	72	*	B1115330	RECOIL SPRING TUBE
22	*	B1115082	CARRIER ASSEMBLY, GLOSS	73		B1115335	RECOIL SPRING TUBE PLUG
22	*	B1115327	CARRIER ASSEMBLY, MATTE	74		B1115338	RECOIL SPRING TUBE PLUG PIN
23	*	B1115337	CARRIER, MATTE	75		B1115342	REINFORCING PLATE
24	*	B1115084	CARRIER LATCH	76		B1221204	RIB REINFORCING PIN
25	*	B1115091	CARRIER LATCH SCREW PIN	77	***	B1115372	SAFETY PLUNGER
27	*	B1115100	CARRIER LATCH SPRING OUTER	78	***	B1115368	SAFETY, RIGHT & LEFT
28	*	B1115105	CARRIER PAWL	79	***	B1115376	SAFETY SPRING
29	*	B1115108	CARRIER PAWL PIN	80	***	B1115380	SAFETY SPRING SCRW
31	*	B1115116	CARRIER SPRING	81	***	B1115386	SEAR
32	*	B1115122	CARTRIDGE STOP	82	***	B1221139	SEAR PIN
33	*	B1115126	CARTRIDGE STOP SPRING	83	***	B1115394	SEAR SPRING
34	*	B1115134	DISCONNECTOR ARM	84		B1111431	FRONT SIGHT
35	*	B1115130	DISCONNECTOR ASSEMBLY	85		B1115404	STOCK BOLT
35	*	B1115132	DISCONNECTOR	86		B1115412	STOCK BOLT WASHER (FOR WOOD STOCK)
36	*	B1221043	DISCONNECTOR PIN	86		B1221167	STOCK BOLT WASHER (FOR COMPOSITE STOCK)
37	*	B1115155	EXTRACTOR, GLOSS	87		B1115414	STOCK PLATE
37	*	B1115247	EXTRACTOR, MATTE	87		B1115415	STOCK PLATE ('94)
38	*	B1115159	EXTRACTOR PIN	89		B1221329	STOCK BOLT SPACER PLATE PIN
39	*	B1115164	EXTRACTOR SPRING	90		B1115428	TRIGGER ADJ SCREW
40		B1115170	FIRING PIN	91	*	B1115426	TRIGGER, STALKER
41		B1115174	FIRING PIN RETAINING PIN	92	*	B1115434	TRIGGER GUARD, GLOSS
42		B1115178	FIRING PIN SPACER	92	*	B1115436	TRIGGER GUARD, MATTE
43		B1115182	FIRING PIN SPRING	93		B1115450	TRIGGER GUARD PIN
44		B1115477	FOREARM, 10GA, MOSGH	94		B1115458	TRIGGER GUARD PIN RETAINER
44		B1115482	FOREARM, 10GA, AURIC	95	*	B1115443	TRIGGER GUARD RAIL, LEFT
44		B111565447	FOREARM, 10GA, STALKER, BLACK	96	*	B1115439	TRIGGER GUARD RAIL, RIGHT
45		B1115195	FOREARM REINFORCING PLATE	97	*	B1115462	TRIGGER PIN
46		B1115199	FOREARM SHOE	98	*	B1221191	TRIGGER SPRING PLUNGER
47		B1115202	FOREARM SHOE SET SCREW	99	*	B1115468	TRIGGER SPRING
48		B1115210	GAS BRACKET SEAL	100	*	B1221193	TRIGGER SPRING PIN
49	*	B1115214	HAMMER	36A	*	B1115150	EJECTOR
				68A		B1115314	RECEIVER RAMP SET SCREW

\* Indicates part must be fitted by Browning Service Department or qualified gunsmith.

\*\*\* Factory replacement only. Firearm must be returned.

\*\*\*\* These parts are no longer available.

+ Part may be purchased only by holders of a current, valid Federal Firearms License.

NOTE: Unless otherwise indicated, part is interchangeable between gauges/calibers.



# 10 Gauge Autoloading Shotgun

*Gold*  
**10**

IMPORTANT: When ordering, list part number, part name, gun gauge/caliber and serial number. Please specify grade. Prices F.O.B. point of shipment — subject to change without notice. Prices effective January 1, 2024.

Ref. #	Part #	Description
74A	BST42039AA	RECOIL PAD, INFLEX II, XL, 1.25"
74A	BST81001AA	RECOIL PAD, INFLEX II, L, 1"
74A	BST81002AA	RECOIL PAD, INFLEX II, M, .75"
74A	BST81003AA	RECOIL PAD, INFLEX II, S, .50"
84A	B1115478	STOCK, 10GA, MOSGH
84A	B1115483	STOCK, 10GA, AURIC
84A	B111560446	STOCK, STALKER, BLACK
92A	B1115454	TRIGGER GUARD PIN BUSH
	B1115088	CARRIER LATCH SCREW
	B1115091	CARRIER LATCH SCREW PIN (94)
	B1115092	CARRIER LATCH PIN RETAINING SCREW
	B1115112	CARRIER PIN
	B1115206	GAS BRACKET
	B1115354	RIB POST FRONT
	B111623702	MAGAZINE CAP SLING SWIVEL STUD RETAINER WASHER
	B111696202	MAGAZINE CAP SLING SWIVEL STUD
	BST1423602	REAR SLING SWIVEL STUD
	BST35777EX	RECOL PAD SCREW (WOOD STOCK)
	BST41181EX	RECOIL PAD SCREWS (COMPOSITE STOCK)

\*Indicates part must be fitted by Browning Service Department or qualified gunsmith.

\*\*\*Factory replacement only. Firearm must be returned.

+ Part may be purchased only by holders of a current, valid Federal Firearms License.

NOTE: Unless otherwise indicated, part is interchangeable between gauges/calibers.



IMPORTANT: When ordering, list part number, part name, gun gauge/caliber and serial number. Please specify grade. Prices F.O.B. point of shipment — subject to change without notice. Prices effective January 1, 2024.

FRONT SLING  
SWIVEL STUD

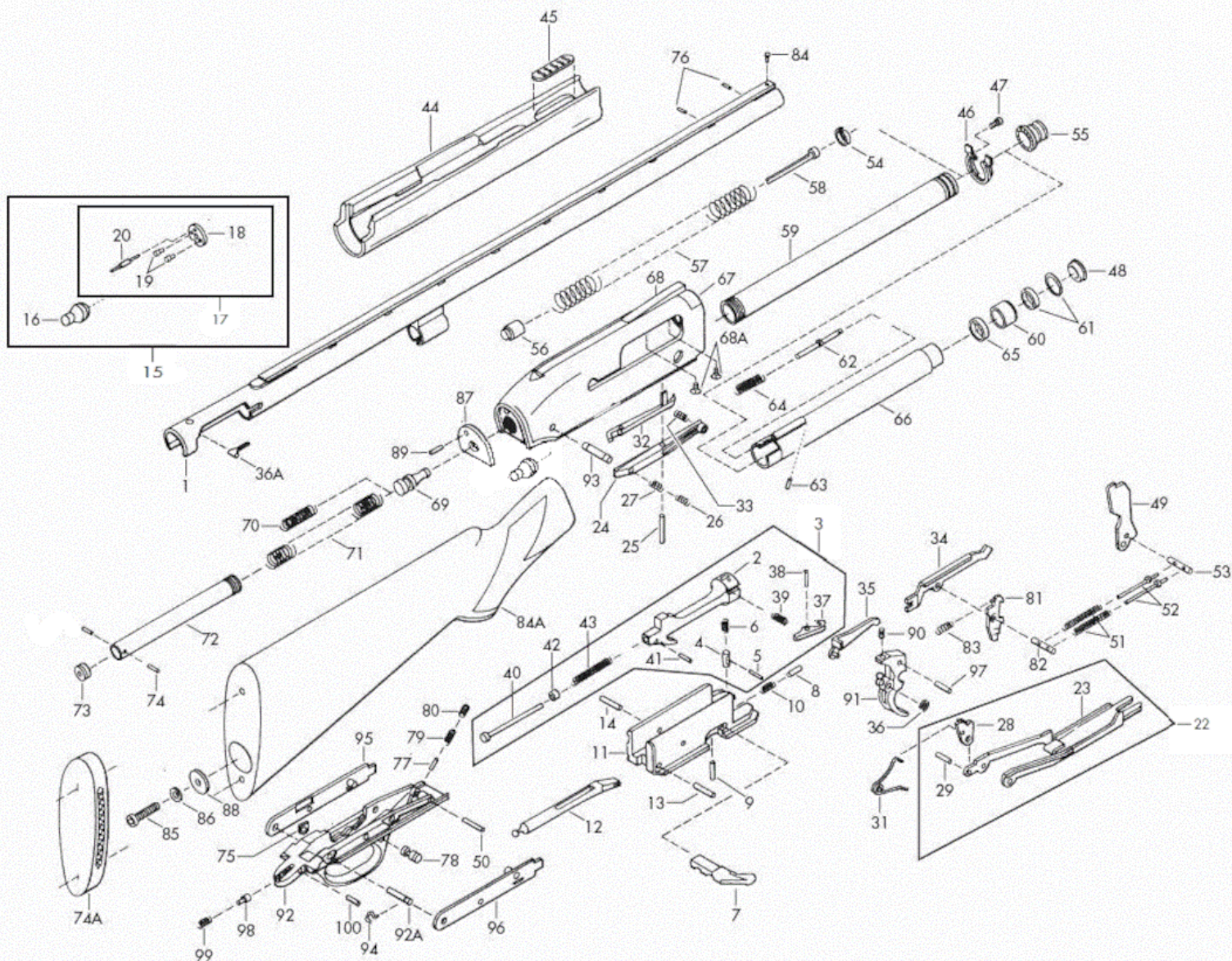
FRONT SLING  
SWIVEL RETAINER

REAR SLING  
SWIVEL STUD

RECOIL PAD  
SCREW

CHOKE  
TUBE

OTHER



\*Indicates part must be fitted by Browning Service Department or qualified gunsmith.

\*\*\*Factory replacement only. Firearm must be returned.

+ Part may be purchased only by holders of a current, valid Federal Firearms License.

NOTE: Unless otherwise indicated, part is interchangeable between gauges/calibers.

Browning Gun Parts Price List